

Participation in Reinvention of Safe and Caring Urakawa Town; A View of Psychiatry users Group "Bethel's House"



By Kohei Yamane

A Person Suffering from Schizophrenia is Working as a Head of the Company and Welfare Facilities.

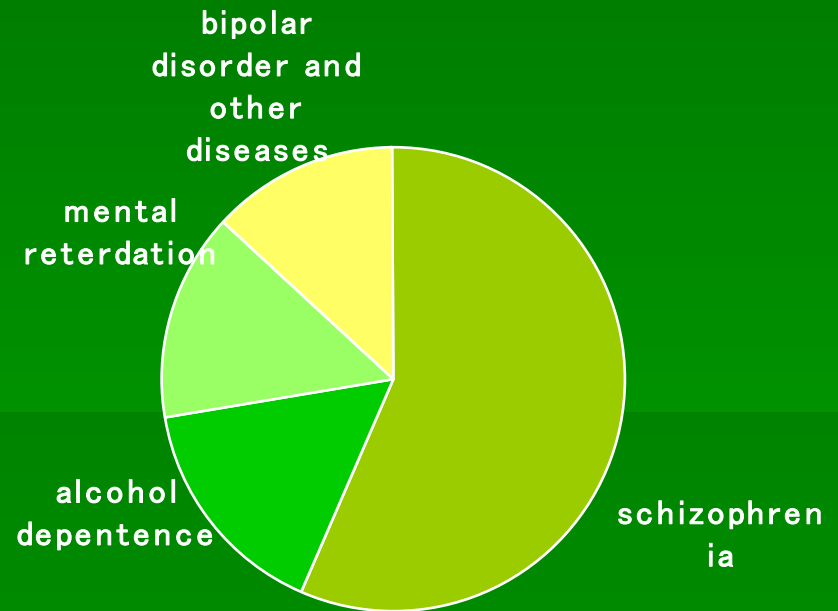
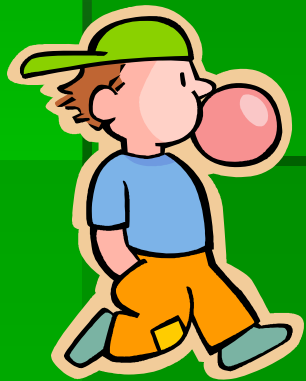


Fig. 1

Urakawa Bethel Home consists of 150 mentally disabled individuals with psychiatric disorders

My Auditory Hallucination

Hello, How are you?



My friend

If you say making safety cars, I will kill you!

Shut up and do what one is told !

Why does he threaten me like previous company...?



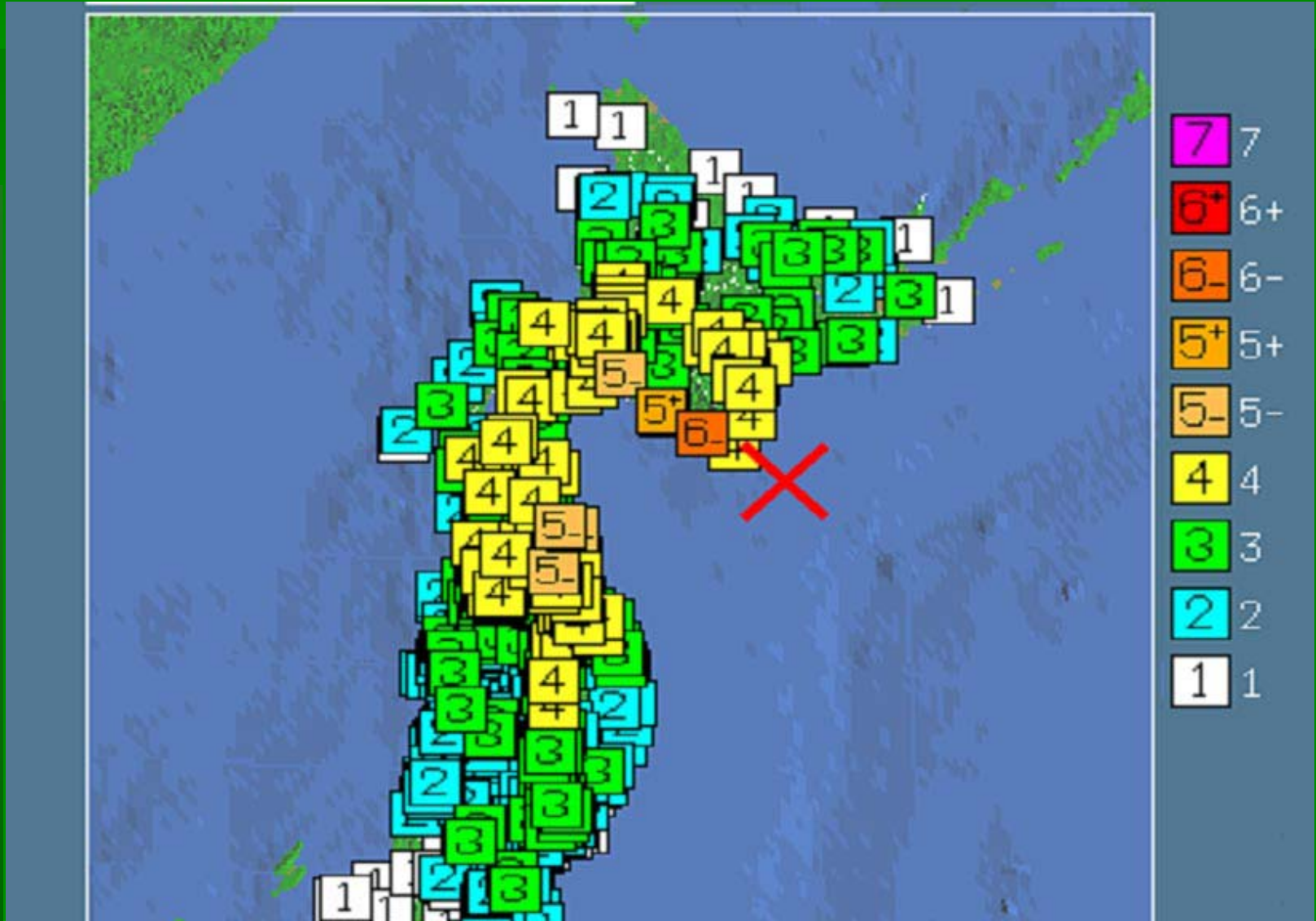
Myself

Philosophy of Bethel House

- ★ Create a working environment where skipping is openly accepted without worrying
- ★ Meeting is more important than eating
- ★ Let's pay more attention to "talking" rather than "doing" when we work

"Information" "Humor" "Caring"

Tokachi - Offshore Earthquake Sep 26, 2003: 6:08



The Damage of Tokachi-Offshore Earthquake



What Did You Do Right After the Earthquake?

I just stayed still with others in my group home.

Being upset, I was walking around to see what happened.

Stayed together with my family

Evacuated after the Tsunami alert.

I kept sleeping because of the medication for schizophrenia. Alerting voice for Tsunami woke me up.

17 yrs-old son got upset, but he said things to calm me down and brought me a radio.

I was in the hospital. I felt relieved when I called home and knew there was no damage.

Condition right after the earthquake

(Mr. Nishiyama's house)
Heating oil spilt all over the place.
Bethel fellows came to help.

Everything was messed up
and I couldn't walk.
I was afraid.

Heavy heater fell down.

I found my home very messy after
coming back from my uncle's
house for my mother's funeral.

(Hot-Heim) They promised to come to
Bethel first for the next earthquake.

I was in hospital. I felt relieved
when I called home and knew
there was no damage.

Good Changes in Bethel House

1.Changes in morning meetings

3. Identifying evacuation routes and sites

2.Utilization of Internet and DAISY

4.Changes in relationship with neighbors

1. Changes in Morning Meetings

★ Setsu Araya

She comes to report sea status every morning.



Everyone is looking forward to Setsu's daily's report.



Everyday, meeting remind everyone's consciousness on disaster preparedness.

Sea in Front of the Shi'osai House



2.Utilization of Internet

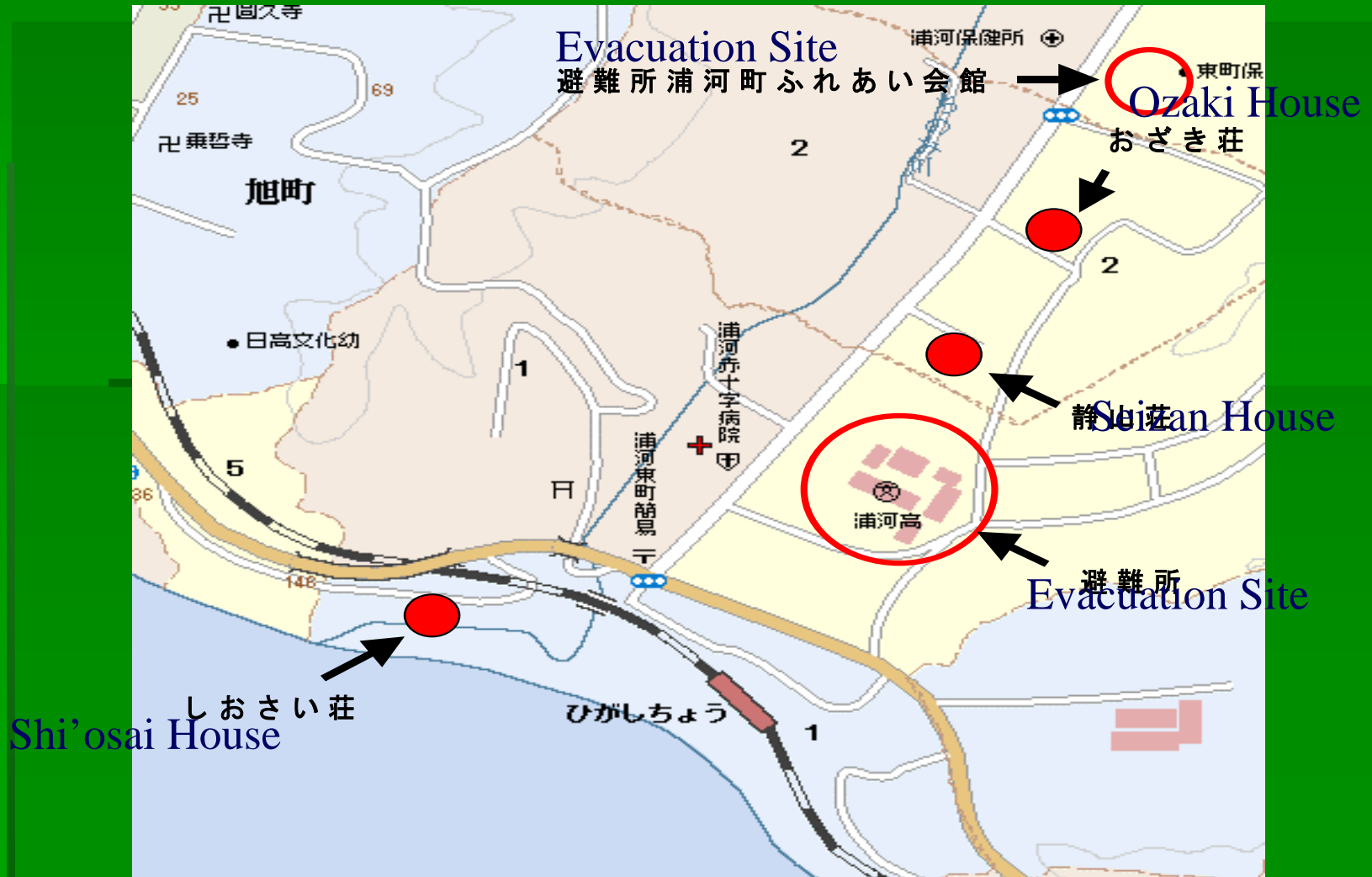
- ★ Make Internet accessible to everyone
- Satoshi Taki'i: he found a web site for earthquake information and comes to report daily earthquake information
- Satoshi became a hero though he used to be denounced "noisy".
- Many Bethel members began to search for disaster preparedness-related info.

2. Utilization of DAISY

- DTB “Guidance for Disaster Prevention” by NRCDC was installed to a desk top computer with a touch panel
- It was easy to understand
- Bethel members are talking about the next step for utilizing DAISY

3. Identifying Evacuation Routes and Sites

Evacuation Sites around Group Homes



4. Changes in Relationship with Neighbors: Story 1

★ Shun Kawabata

He let his neighbor use his towel who Shun had not talked to before the earthquake.

→ Now, Shun greets the neighbor everyday and casual interaction started.

4. Changes in Relationship with Neighbors: Story 2

- Kiyoshi, myself and 2 others from Bethel's House had joined the disaster drill at Urakawa Town.



- We come to know neighbors including the chief of the neighborhood community association.



- We also joined a drill for rescue breathing; a fireman said,
“You have an aptitude!”.

For the Future

- We advance the formulation of GIS for persons with disabilities to decide our intention.
- Utilize SMIL 2.1

Conclusion

Through practical use of ICT, persons with disabilities should also attend disaster preparedness planning and community activities so that we can make a safe town, like Urakawa.